

Guide to Software Enhancements in Scoreboard/QuickScore Version 2.13

Editing Templated Dashboard Copies

In the past, the only way to have similar, but not identical, dashboards across multiple organizations was to make each dashboard an independent copy. Editing these dashboards was a very time consuming and repetitive process with potential for errors.

Dashboard templates were useful for many situations, but only when the copies were identical.

In the latest version of the software, you can now edit templated dashboards to add new objects.

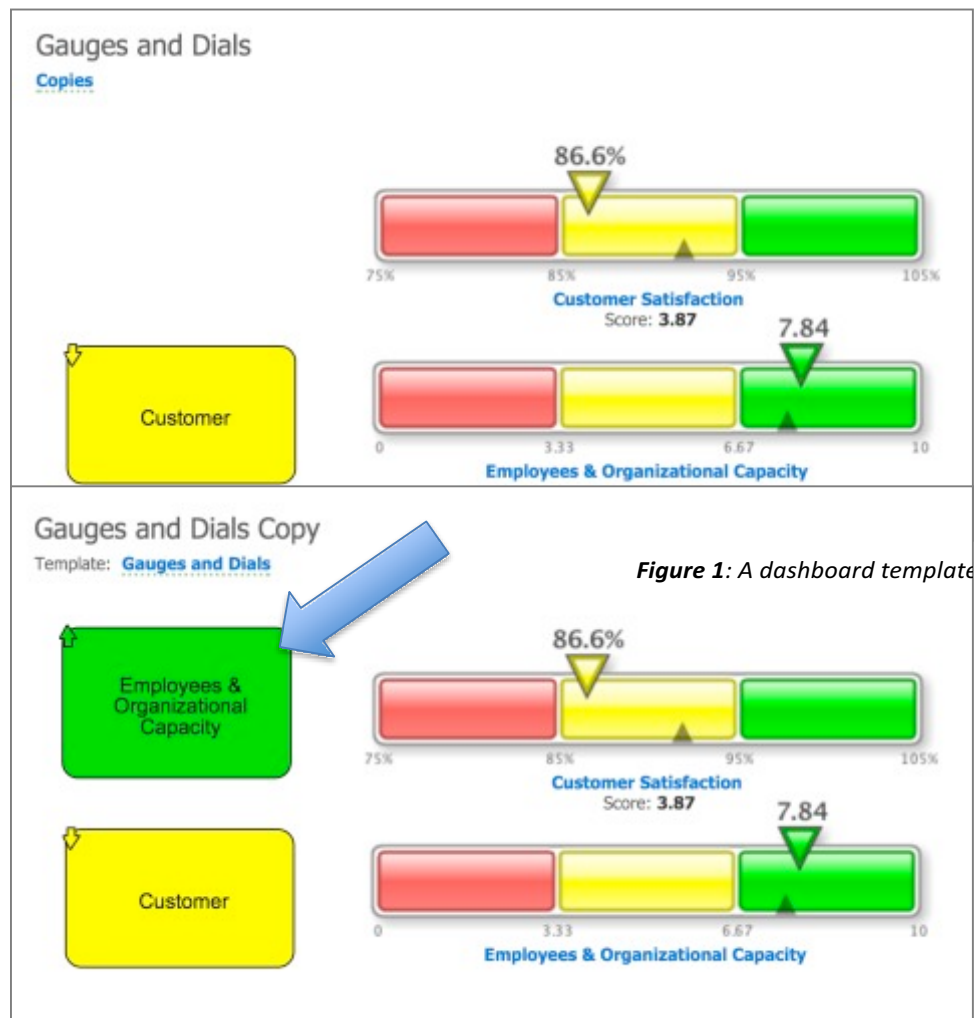


Figure 1: A dashboard template

Figure 2: A templated copy with a new object added

The software still prevents you from editing the objects that come from the template. The one exception is that you can override the drilldown target.



Figure 3: Editing the drilldown on a templated object

When you’re editing a templated dashboard copy and you click the Swap button, it still shows you where all of the dashboard objects come from. The software will not allow you to swap the objects’ sources, however.

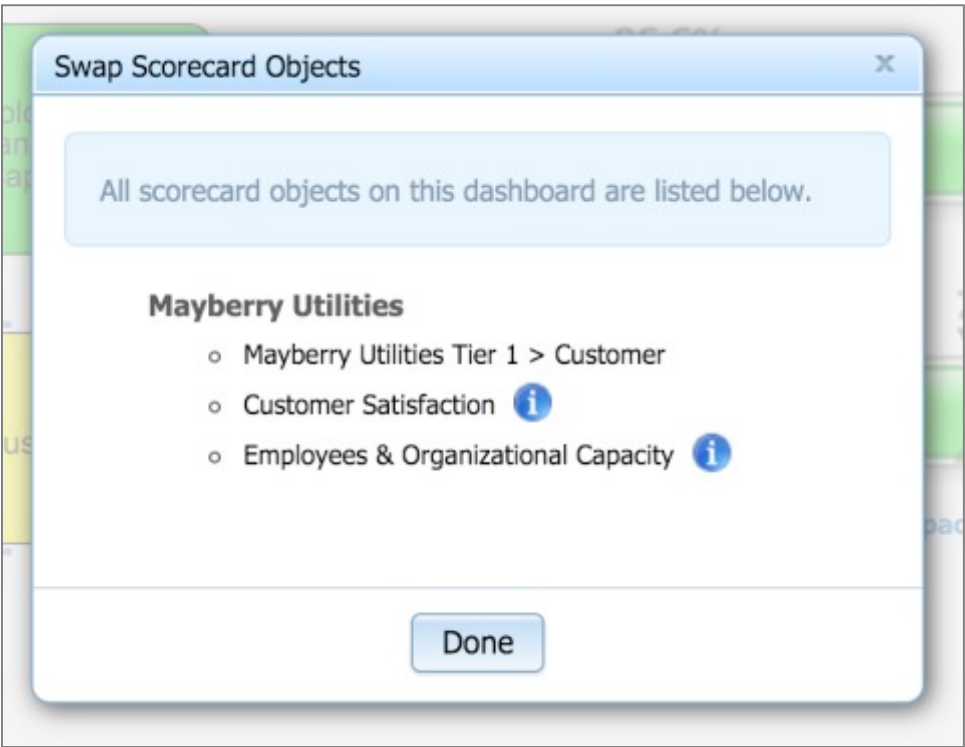


Figure 4: The swap dialog for a templated dashboard

Add Initiative Objects to Dashboards

You can now add several new types of initiative objects to dashboards. One of these is the Historical Performance Chart.

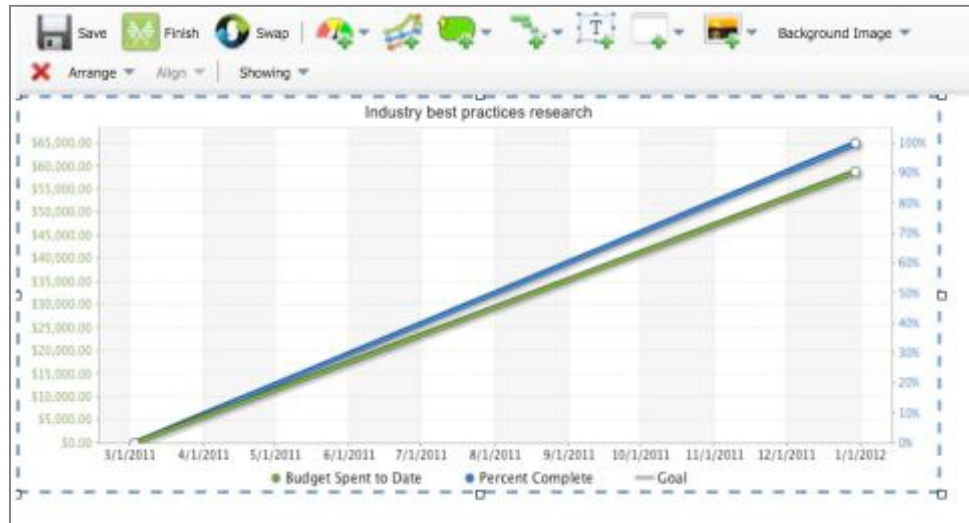


Figure 5: An EVM historical performance chart

You can now also show the following initiative data as performance bubbles:

- Name
- Start Date
- End Date
- Budget
- Spent to Date
- Percent Complete
- Percent Time Elapsed
- Projected End Date
- Projected End Date Variance
- Projected Budget
- Projected Budget Variance
- Funds Remaining

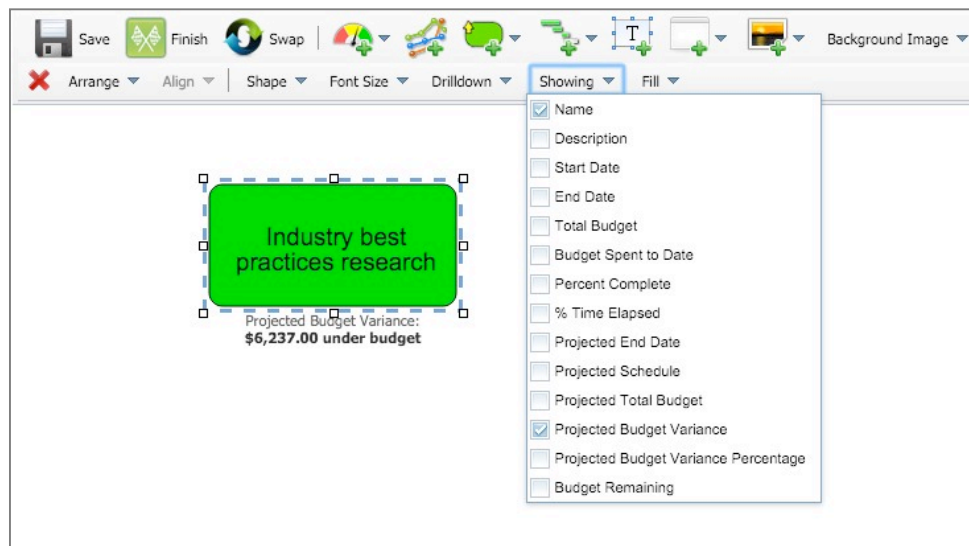


Figure 6: Possible display options for initiative objects

Outline for Dashboard Text Boxes

In the latest version of the software there is now the ability to specify an outline for text boxes. Users can also choose between various outlinethickness options.

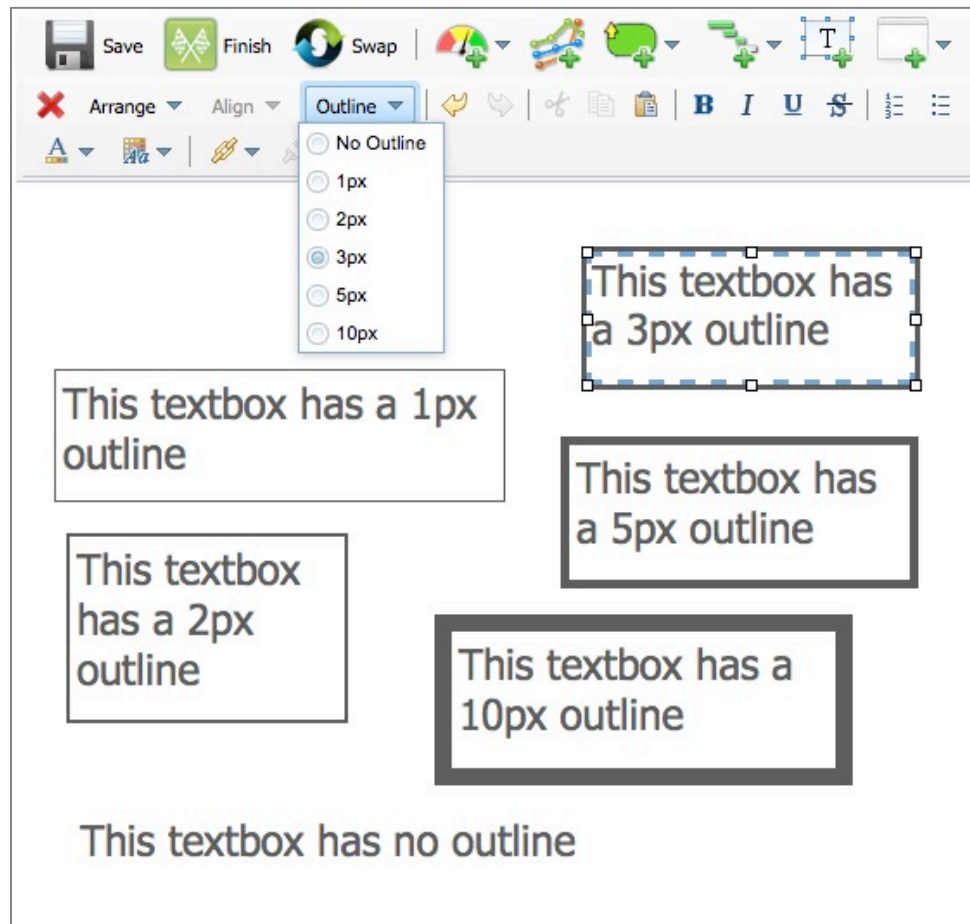


Figure 7: The new textbox outline options

Text Alignmentfor Performance Bubbles

The text alignment of performance bubbles can now be changed in the latest version of the software.

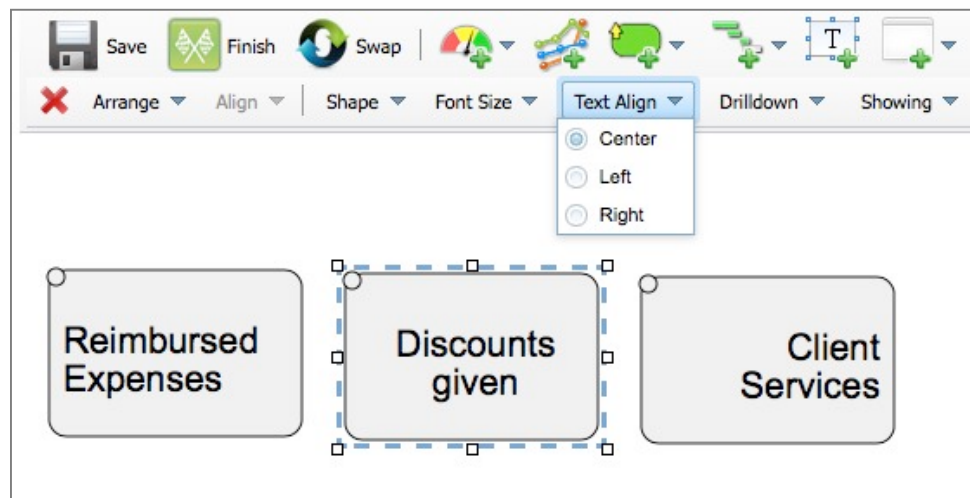


Figure 8: The new performance bubble text align options

Changing Multiple Dashboard Objects at Once

If you select multiple dashboard objects of the same type, you can now change all of their settings at once. This includes things like shape, font size, fill, and the data they show.

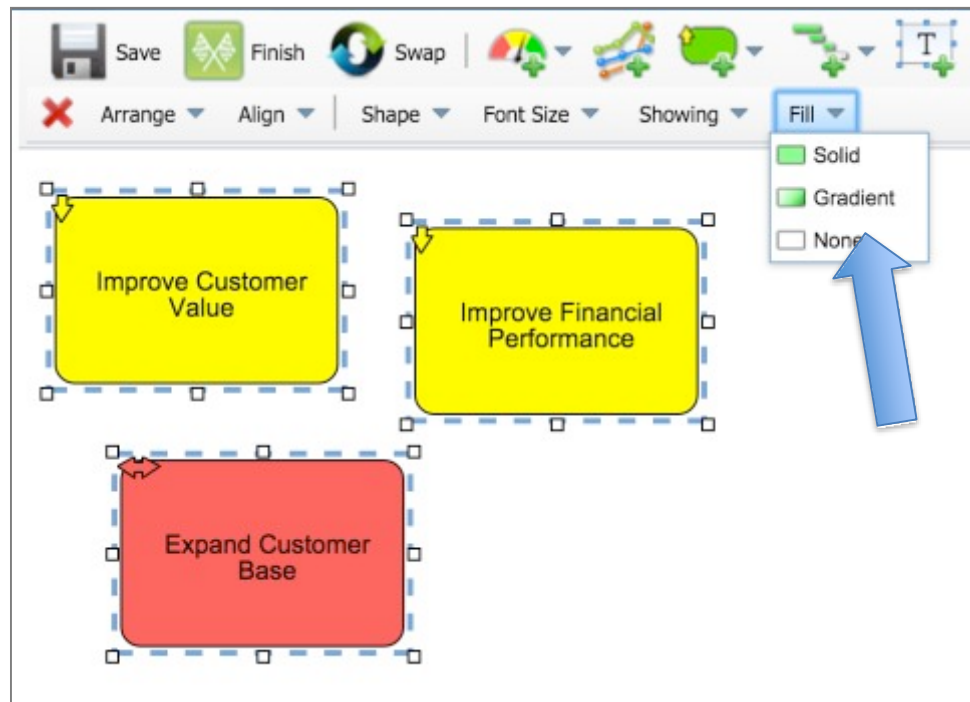


Figure 9: Changing multiple objects at once

Dashboard Edit Windows Stay Open

When you're editing a dashboard, the windows now stay open until you click somewhere else. For example, you'll now be able to add multiple dashboard bubbles by just clicking multiple times in the tree. Similarly, you can now change multiple things in the "Showing" menu at once too.

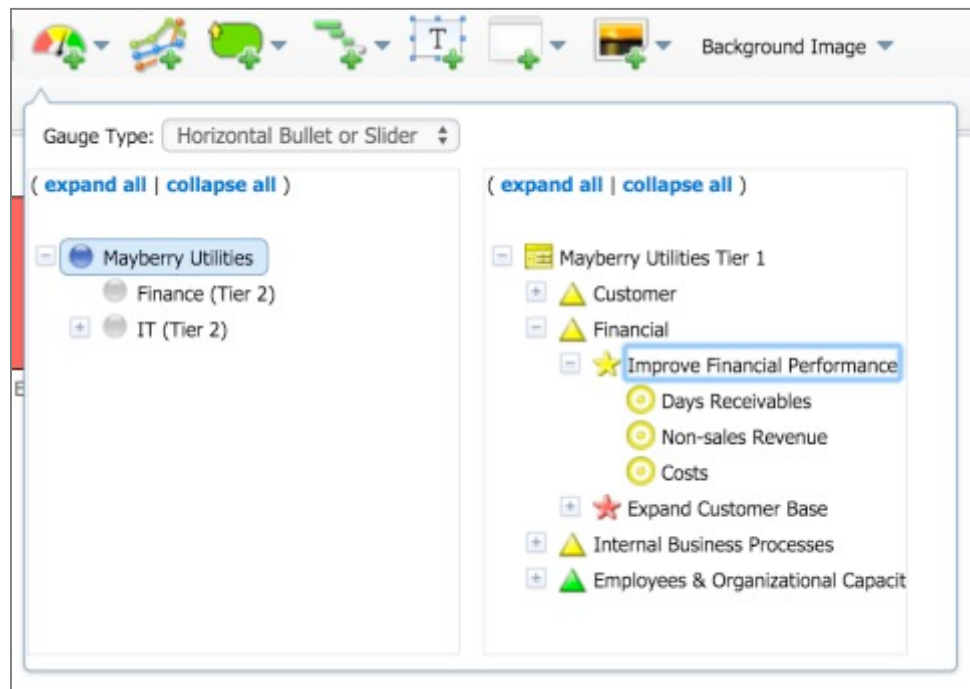


Figure 10: An add object menu

Scorecard Owner/Updater Report Uses Searchable User Selection Control

The scorecard owner/updater report now has a modern user select that allows you to search for users. This matches the functionality in other places in the software.

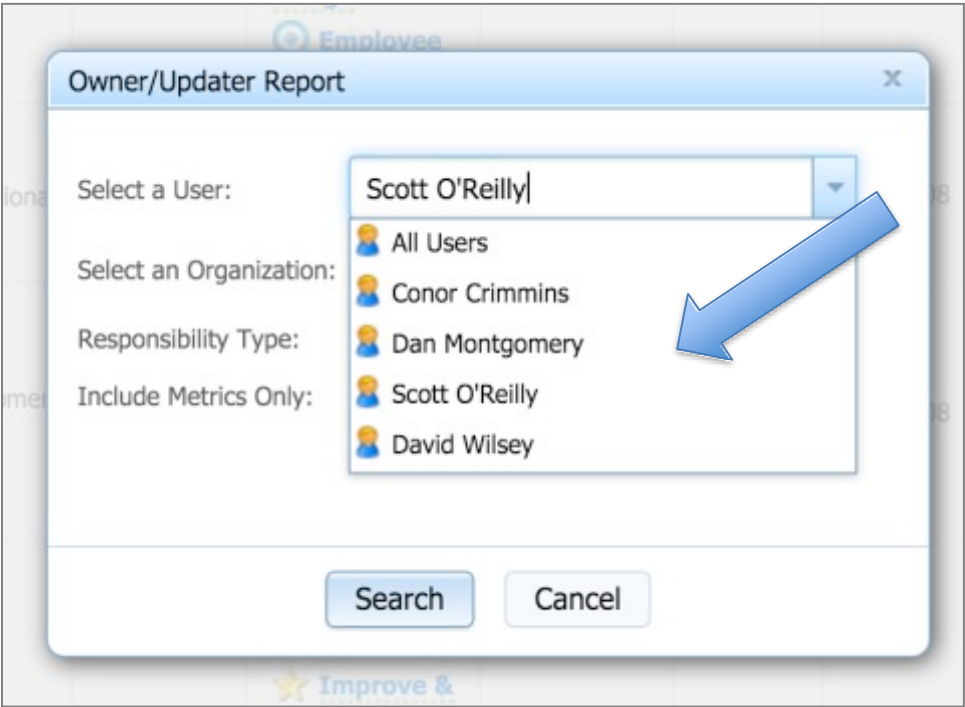


Figure 11: The new user selector in the owner/updater report

History Records for Deleted Users Are More Useful

In the past, when a user was deleted, their audit history records were either deleted or not useful. The software now remembers the names of deleted users and displays them in the history.

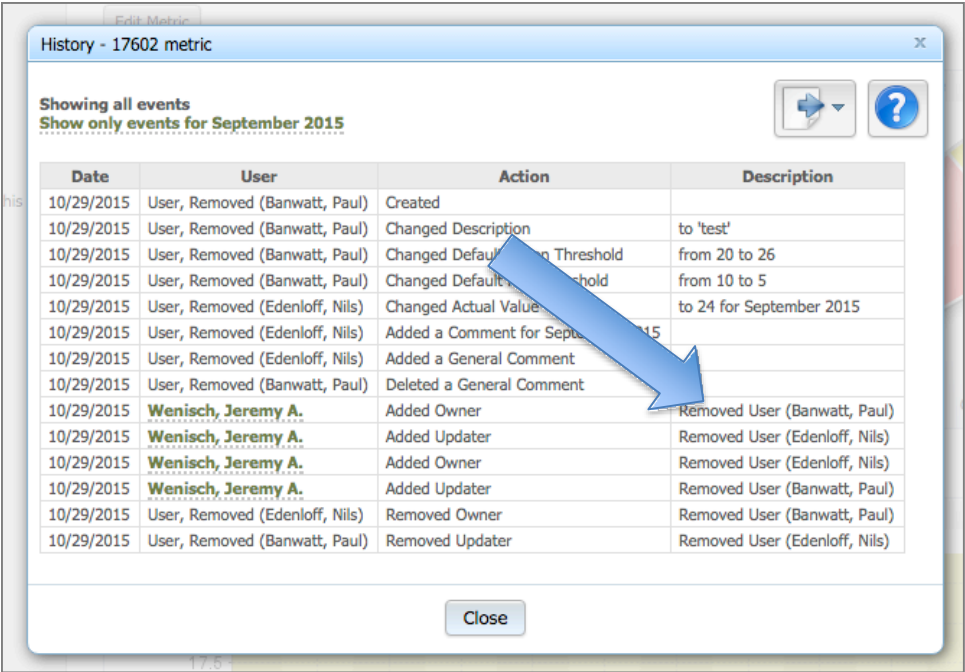


Figure 12: Audit records showing deleted users

Allow Scores to be Used in Metric Equations

Metric scores can now be used in metric equations. The new syntax to reference a score in the current period is:

`S (node_id)`

And a score from the previous period is:

`S (node_id, -1p)`

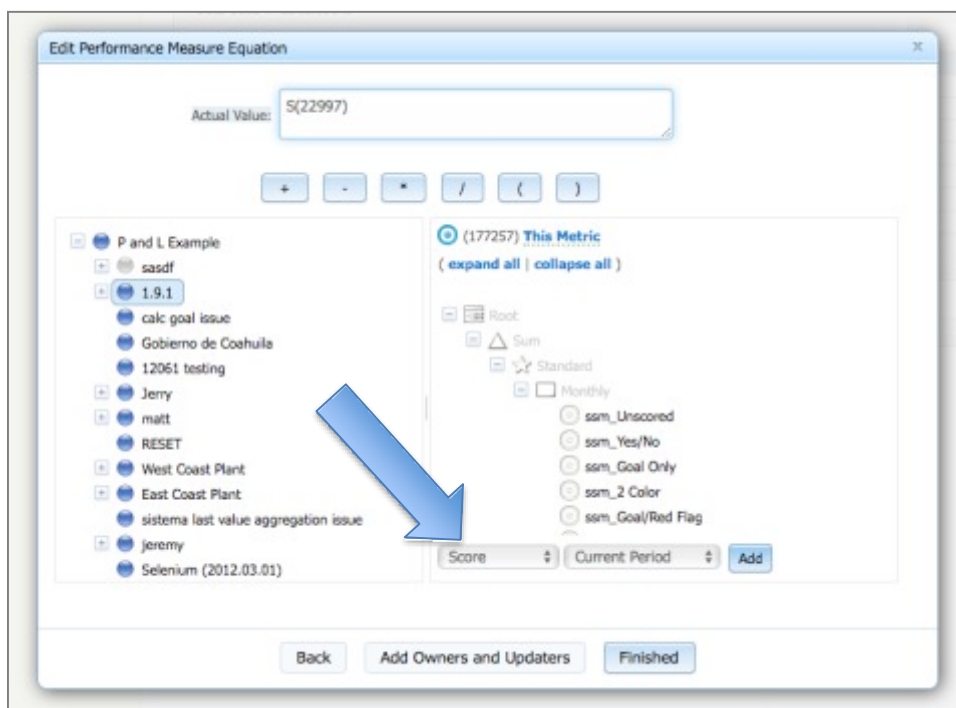


Figure 13: Scores in the metric equation builder

Importing New Types of Data with Connect

Connect is a data import tool that can connect to data sources and use them to import data into the software on a scheduled basis. Connect is now able to import types of data that haven't been possible in the past.

When importing metric values, there is now an optional "Comment" field. This allows users to import period-specific comments along with their metric values.

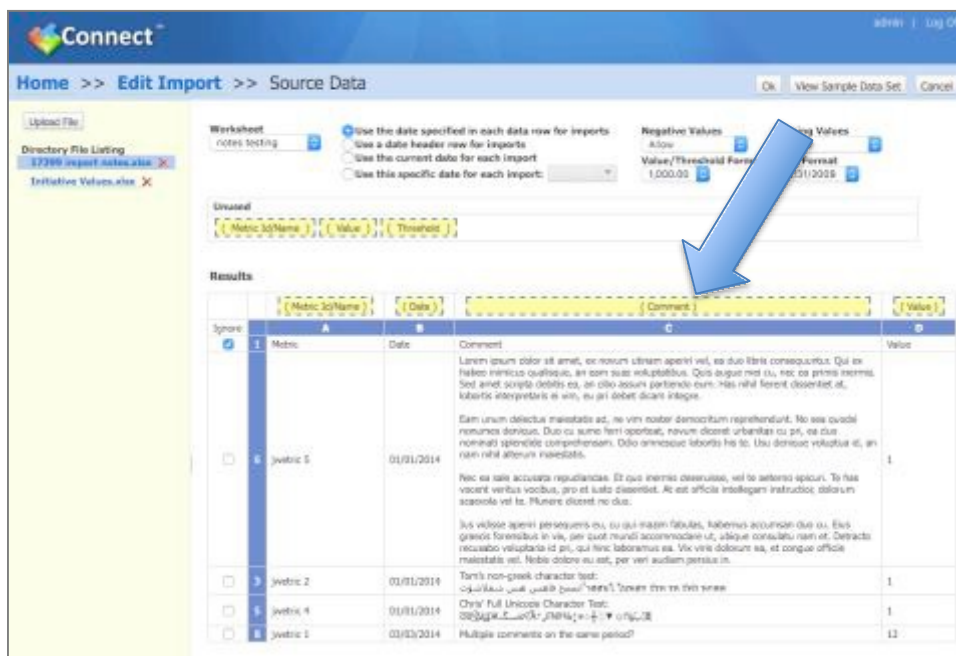


Figure 14: The new "Comment" column

There is also a new “Tags” column when importing scorecard structure. Users can import tags that are separated by a comma.

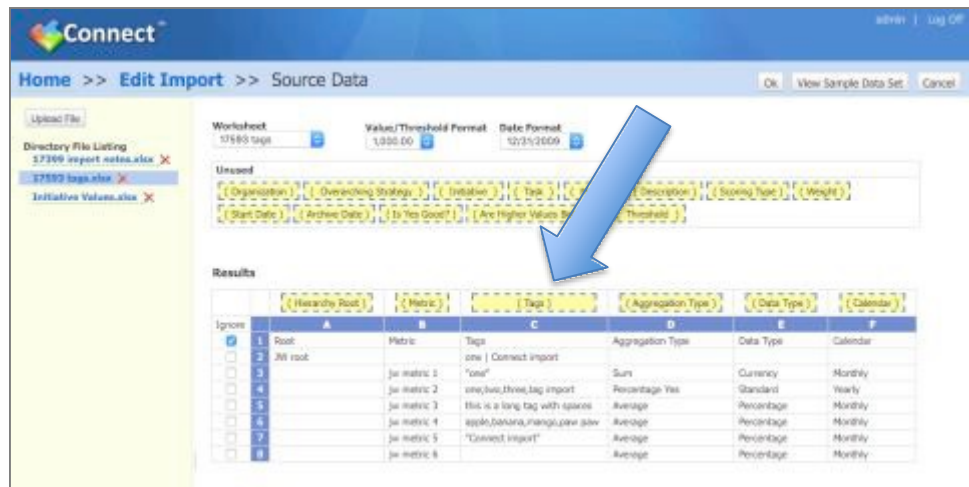


Figure 15: The new “Tags” column

The largest change to Connect is the new “Update Initiative Status” import type.

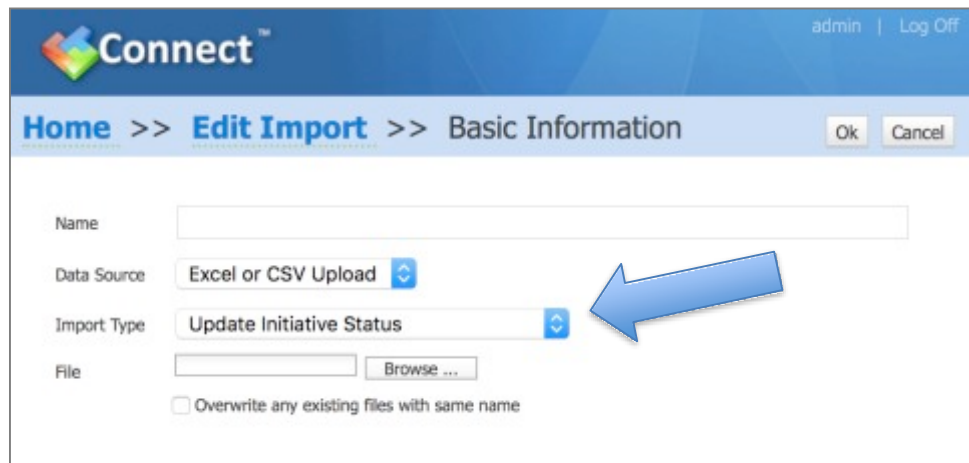


Figure 16: The new “Update Initiative Status” import type

An initiative status update is very similar to a metric value update. The only difference is that action plan status updates have different columns:

- Initiative Name
- Date
- Percent Complete (optional)
- Actual Cost of Work Performed (optional)
- Comment (optional)

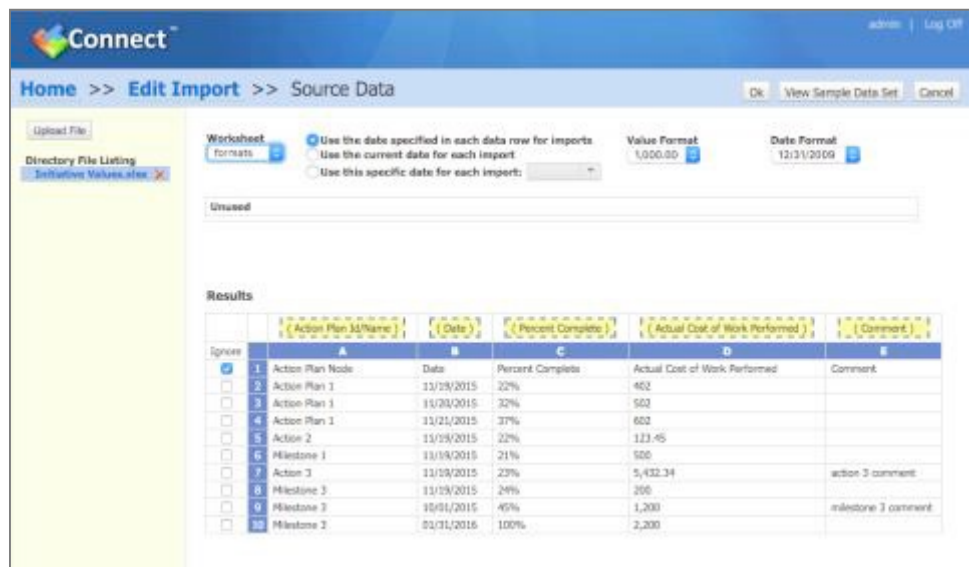


Figure 17: An example action plan status import

