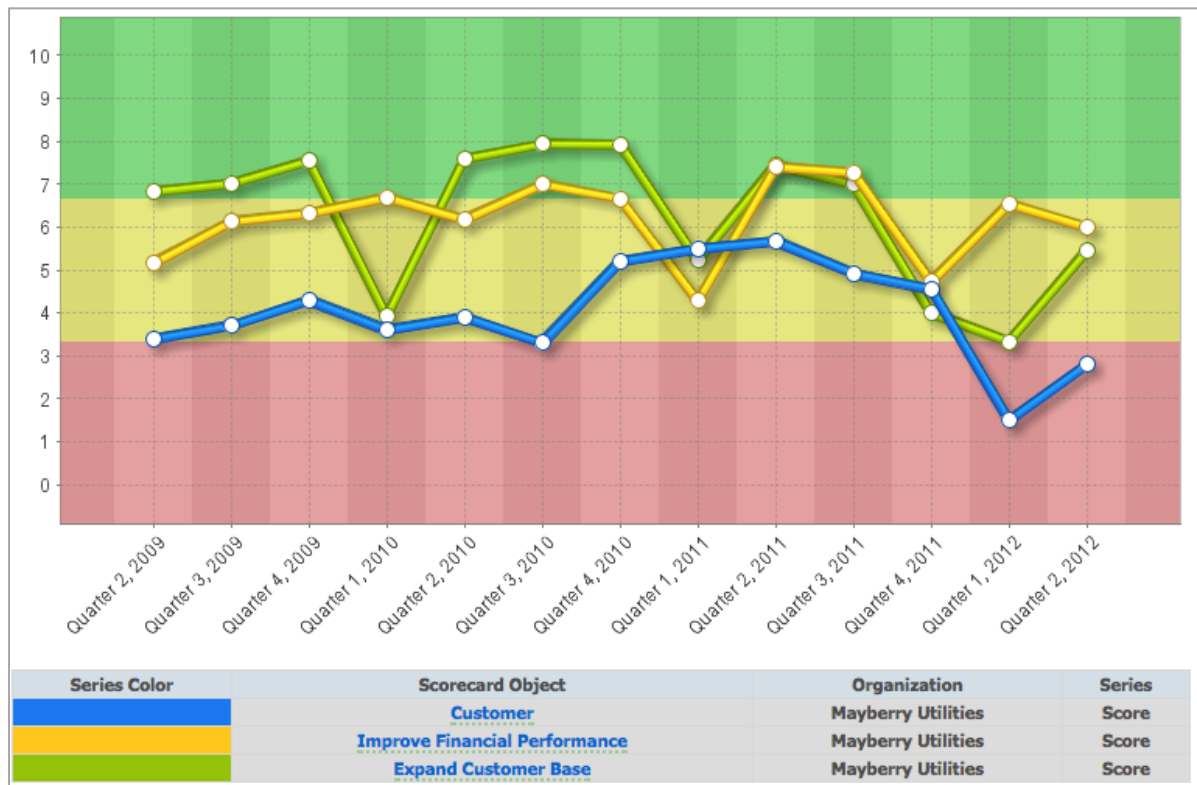


# Version 2.8 – Enhancements

## Change Default Chart Colours

When charts are created in QuickScore/Scoreboard the system automatically chooses the colours for the data series. This could be confusing because red, amber and green are also used to designate performance.



QuickScore/Scoreboard now uses a default chart colour palate without red amber or green.

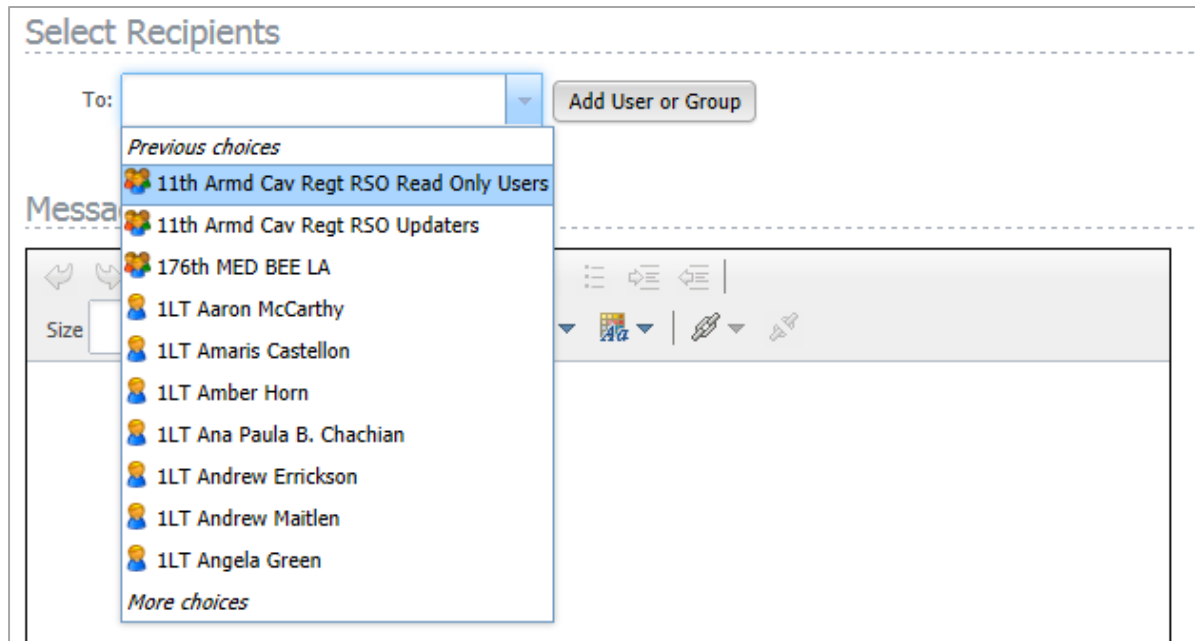
In previous versions, both users and groups were listed in the same dropdowns

Select Recipients

To:  Add User

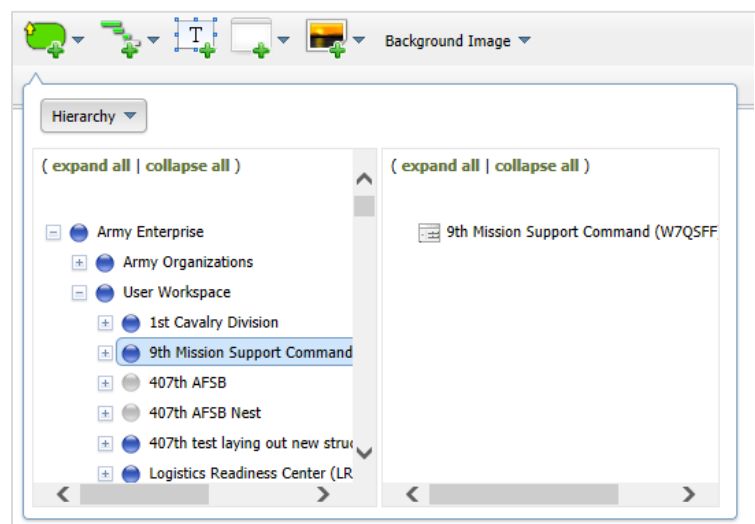
- Everyone
- All Power Users
- All Communication Users
- All Viewers
- Admin
- Benjamin Himmelfarb
- Conor Crimmins
- David Wilsey
- Liz Tonks
- Rob Jay
- More choices

In version 2.8 there are now User and Group icons next to the names. The text button has also been updated to reflect the drop-down content.



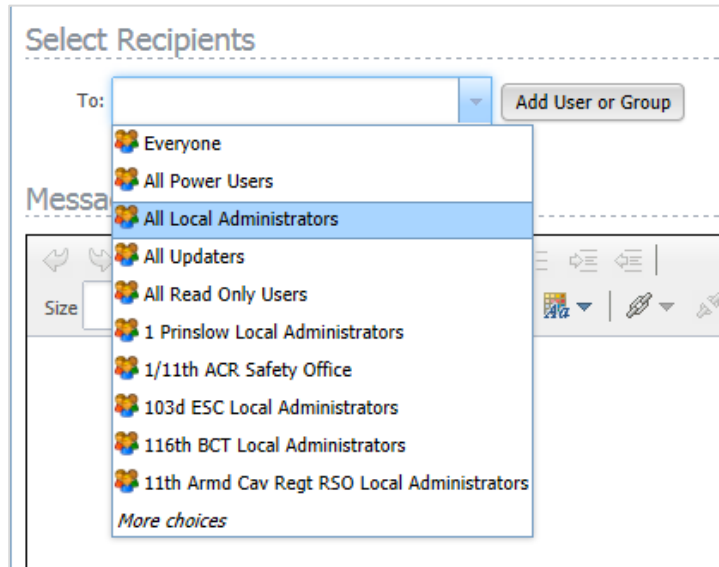
## Default to Current Organisation when Building Dashboards

The user interface for building dashboards requires the user to first select the organisation of the object that they want to add to the dashboard. QuickScore/Scoreboard now defaults to the organisation where the dashboard is located.



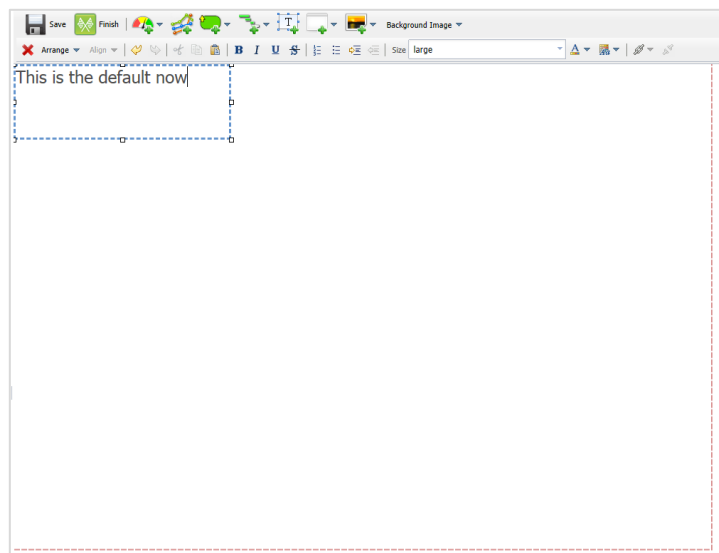
## Send Instant Alerts to Everyone or to Specific Group Types

Administrators can now send instant alerts to all users in the system or to all users in a specific group.



## Increase the Default Size of Dashboard Text Objects

The default font size of dashboard text objects has been increased from xx-small to Large and the text box size has increased as well



## Improved Full-Screen Briefing Books

In previous versions of QuickScore/Scoreboard sending a Briefing Book to a full screen opened a new browser window. With the content in a new window there was no navigation and users could not click on objects and drill-down for further information.

Financial Metrics Performance February 2009

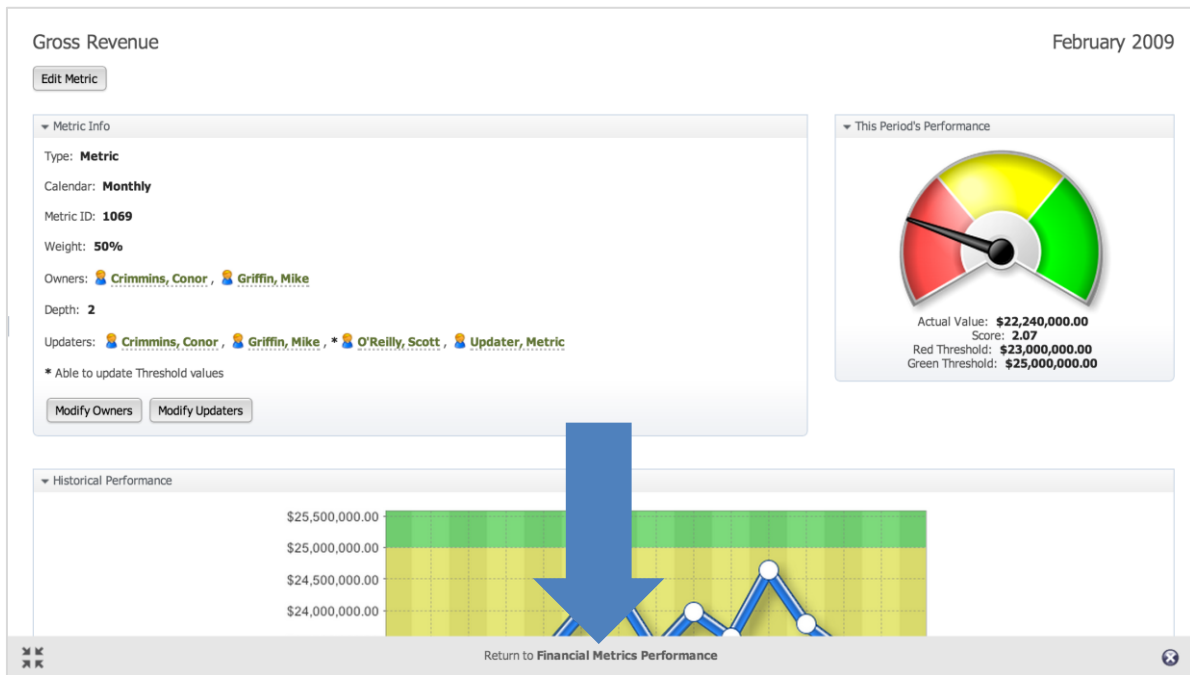
[Edit Report](#)
[Export Hierarchy Structure](#)
[Export Values](#)

ID	Metric	Owner(s)	Assigned Calendar	Series	January 2009	February 2009	YTD Quarter 1, 2009
1071	Monthly Material Costs to Gross Revenue Ratio	Crimmins, Conor Griffin, Mike O'Reilly, Scott	Monthly	Actual Value	18	20	19
1567	Test Sub-metric		Monthly	Actual Value			
1072	Monthly Material Costs to Gross Revenue Ratio	Griffin, Mike O'Reilly, Scott	Monthly	Actual Value	28	30	29.33
1070	Operating Margin	Crimmins, Conor Griffin, Mike O'Reilly, Scott	Monthly	Actual Value	24.31%	25.45%	24.51%
1069	Gross Revenue	Crimmins, Conor Griffin, Mike	Monthly	Actual Value	\$23,340,000.00	\$22,240,000.00	\$68,800,000.00
45	CA Plant Scrap %		Monthly	Actual Value	0	1	0.33
49	overtime		Monthly	Actual Value	7.68%	6.4%	6.49%
408	MN Plant Scrap %		Monthly	Actual Value	3	2	2.33
409	overtime		Monthly	Actual Value	16.5%	17.95%	16.23%

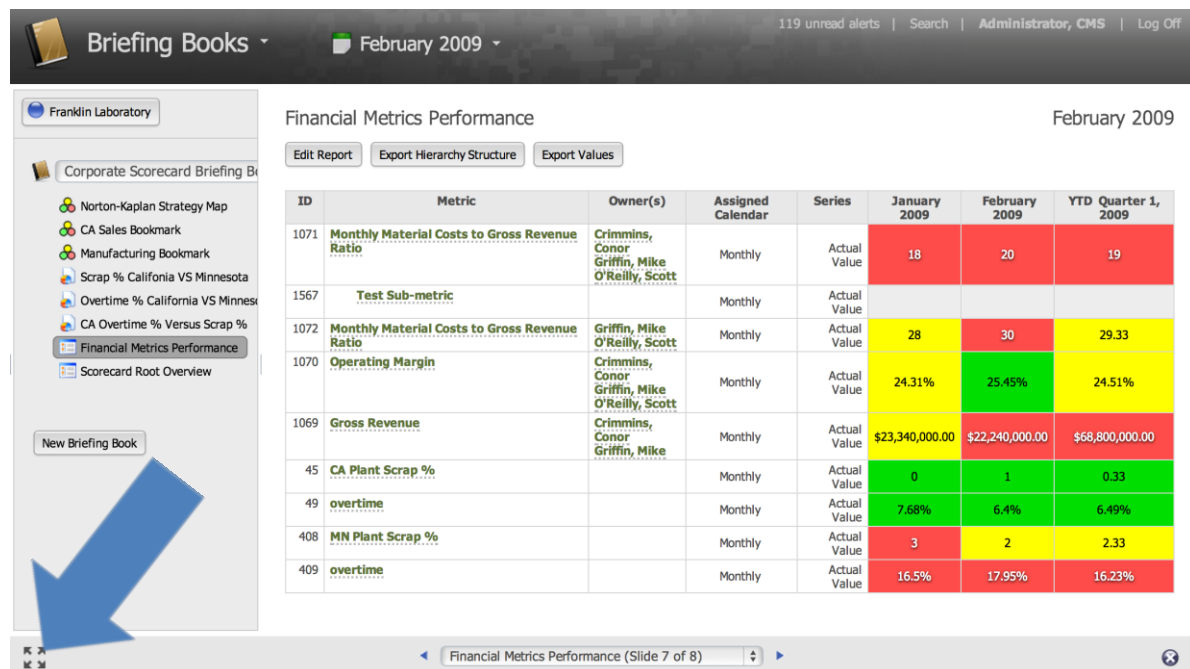
Financial Metrics Performance (Slide 7 of 8)

In Version 2.8 Briefing Books are now in the current window. The top and left navigation is hidden and the navigation bar appears at the bottom of the screen.

If users click on a link that takes them away from the slide they are currently viewing, the current slide indicator at the bottom changes to a 'link-back' to the previous slide.



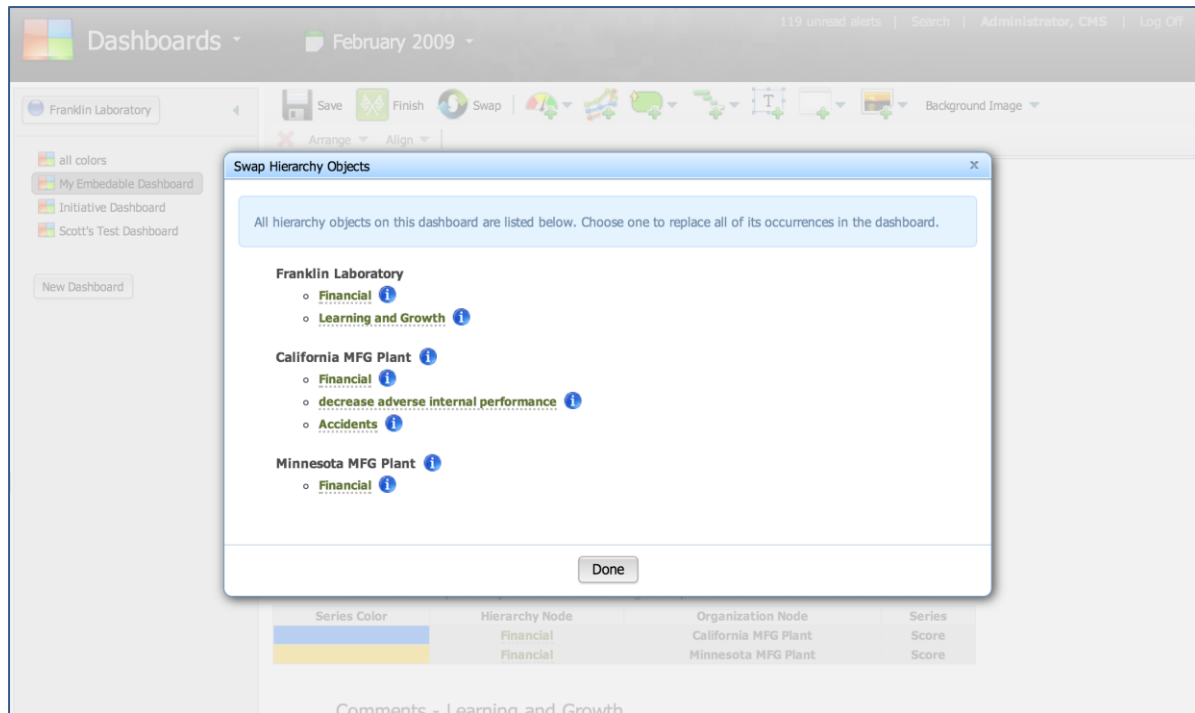
In the lower left corner is a button that toggles the display. By default navigation is hidden, but users may find it helpful to turn navigation back on temporarily when drilling down or changing calendar periods.



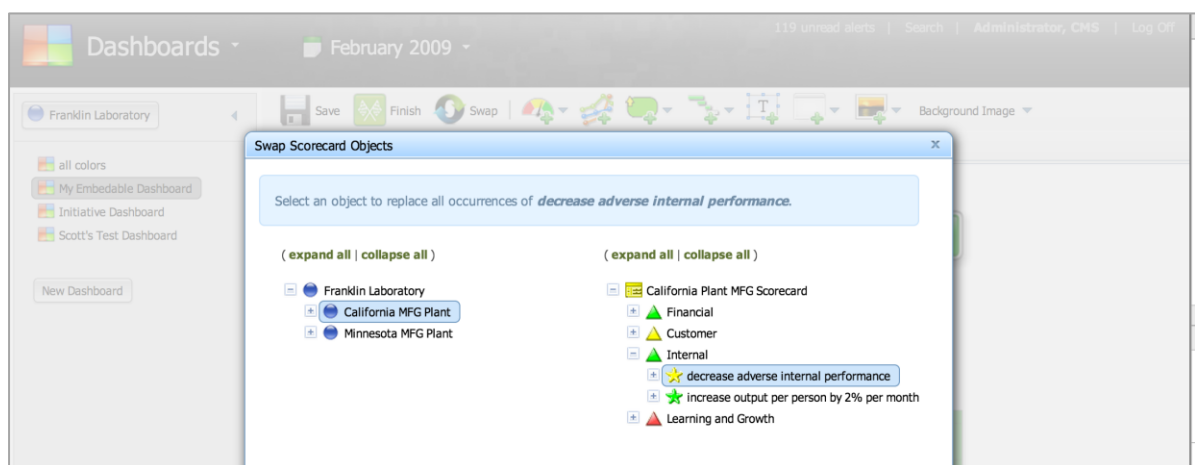
## New “Swap” Button for Editing Dashboards

Dashboards can show information about many different hierarchy objects. In the current version it can be very time consuming to rebuild a dashboard with the same appearance but for different hierarchy objects

When users click on the new “Swap” button, it lists all of the current hierarchy objects represented in the dashboard. Clicking on the information icon next to each hierarchy object displays the full path of the object.

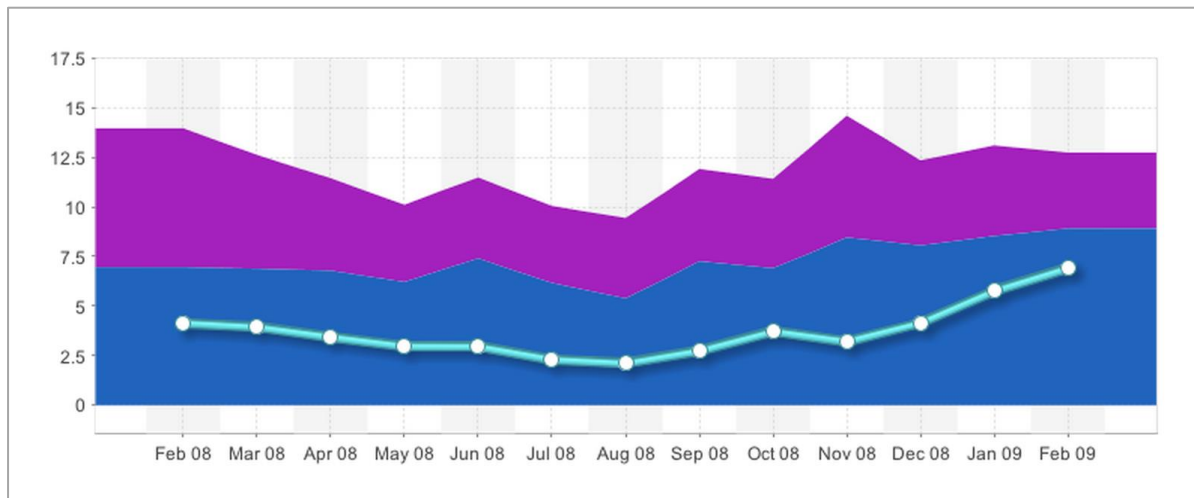


When users click on the name of a hierarchy object, they are now shown a menu where they can replace all instances of that hierarchy object in the dashboard.



### Stacked Area Combo Charts

In previous versions users could create stacked area charts but could not combine them with other charts. In version 2.8 users can now do this.



### Add Period to Date Option in Equations

There is a new equation option for calculated metrics called “Period to Date”. This allows users to create metrics with values based on rolling sums of other metrics values or thresholds. For example:

- TD(Quarterly, test1) – would result in a quarter to date sum for metric test1 value
- TD(Yearly, test2, Goal) – would result in a year to date sum for metric test2’s Goal

### Automatically Remap Dashboards Objects after Copy/Paste

When a dashboard is copied from one organisation to another, the software now tries to intelligently re-map the objects on the dashboard to match the objects in the new organisation. For this to work, the hierarchy structures for the two organisations must be named identically.

### Improved Exports

It is impossible for exports to perfectly match on-screen content. However in version 2.8 the export function has been improved in several areas. Dashboards now retain fonts wherever possible. The dotted red export guidelines reflect the export are more closely and finally ‘note’ exports match the source content more closely as well.